

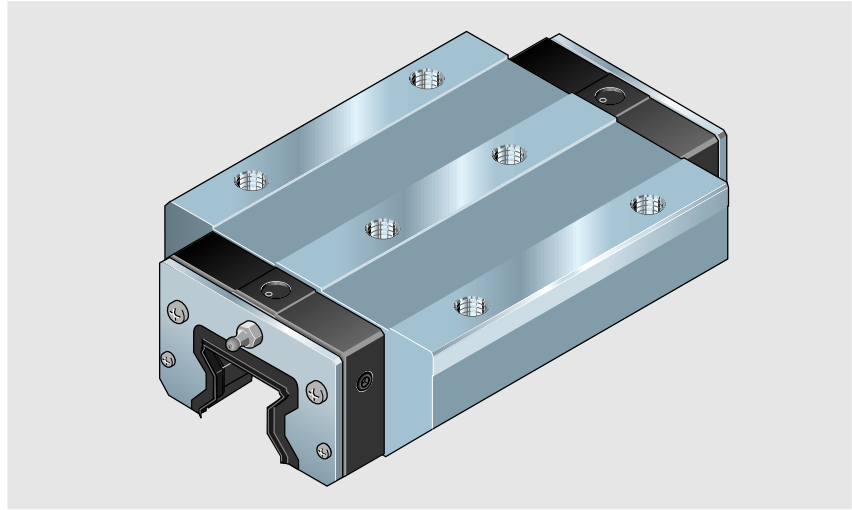
STAR – Roller Rail™ Systems

Runner Blocks

Runner Blocks 1853-

Standard width long

Special version:
Zinc-iron coating, yellow chromated, in accuracy class H and preload 0.03 C.
Part numbers:
1853-.13-30



Part numbers

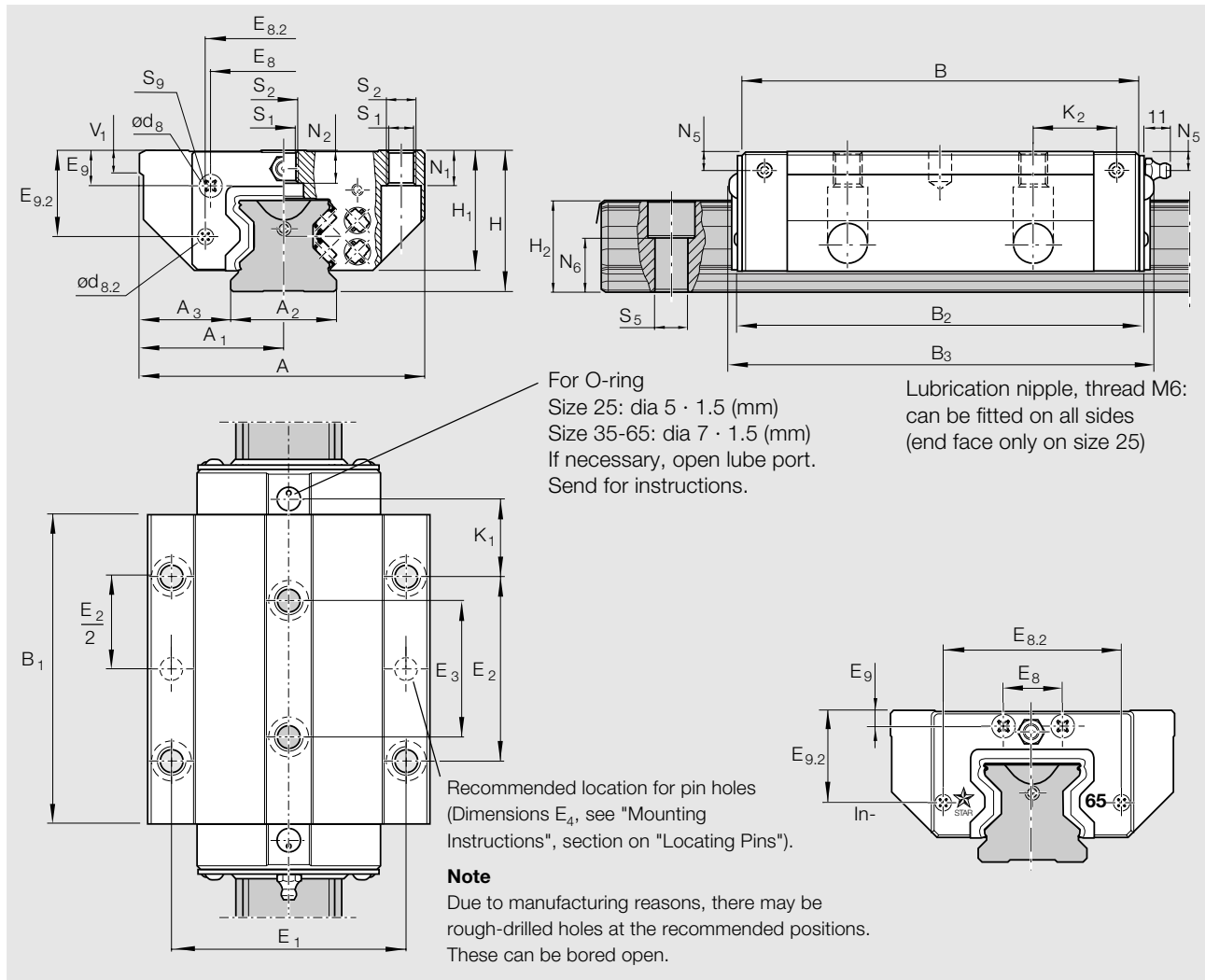
Size	Accuracy class	Part numbers		
		Preload 0.03 C	Preload 0.08 C	Preload 0.13 C
25	UP	1853-219-10	1853-229-10	1853-239-10
	SP	1853-211-10	1853-221-10	1853-231-10
	P	1853-212-10	1853-222-10	1853-232-10
	H	1853-213-10	1853-223-10	–
35	UP	1853-319-10	1853-329-10	1853-339-10
	SP	1853-311-10	1853-321-10	1853-331-10
	P	1853-312-10	1853-322-10	1853-332-10
	H	1853-313-10	1853-323-10	–
45	UP	1853-419-10	1853-429-10	1853-439-10
	SP	1853-411-10	1853-421-10	1853-431-10
	P	1853-412-10	1853-422-10	1853-432-10
	H	1853-413-10	1853-423-10	–
55	UP	1853-519-10	1853-529-10	1853-539-10
	SP	1853-511-10	1853-521-10	1853-531-10
	P	1853-512-10	1853-522-10	1853-532-10
	H	1853-513-10	1853-523-10	–
65	UP	1853-619-10	1853-629-10	1853-639-10
	SP	1853-611-10	1853-621-10	1853-631-10
	P	1853-612-10	1853-622-10	1853-632-10
	H	1853-613-10	1853-623-10	–

Notes on dynamic load capacities and moments

The dynamic load capacities and moments are based on 100,000 m travel.

For comparison with the 50,000 m travel sometimes applied for rail-type guideways, the figures for **C**, **M_t** and **M_L** in the table should be multiplied by 1.23.

Size	Load capacities (N)		Moments (Nm)			
	C dyn.	C ₀ stat.	M _t dyn.	M _{t0} stat.	M _L dyn.	M _{L0} stat.
25	33300	70000	432	908	420	900
35	69700	149300	1375	2953	1135	2430
45	119200	256600	2941	6331	2520	5430
55	165000	345300	4837	10122	4030	8440
65	265500	525600	9410	18630	7960	15760



Size	Dimensions (mm)																	
	A	A ₁	A ₂	A ₃	B	B ₁	B ₂	B ₃	H	H ₁	H ₂ ¹⁾	H ₂ ²⁾	V ₁	d ₈	d _{8.2}	E ₁	E ₂	E ₃
25	70	35	23	23.5	109.0	81.5	111.0	115	36	30	23.55	23.40	7.5	5.7	-	57	45	40
35	100	50	34	33.0	138.0	103.6	140.0	145	48	41	31.10	30.80	8.0	5.7	5.2	82	62	52
45	120	60	45	37.5	172.5	134.0	176.5	183	60	51	39.10	38.80	10.0	7.6	5.7	100	80	60
55	140	70	53	43.5	205.5	162.1	209.5	216	70	58	47.85	47.55	12.0	9.5	5.7	116	95	70
65	170	85	63	53.5	254.0	194.0	258.5	264	90	76	58.15	57.85	15.0	-	-	142	110	82

¹⁾ Dimension H₂ with Rail Seal cover strip. NEW: Size 35 - 65, 0.3 mm Rail Seal ²⁾ Dimension H₂ without Rail Seal cover strip

Size	Dimensions (mm)														Weight (kg)
	E ₈	E _{8.2}	E ₉	E _{9.2}	N ₁	N ₂	N ₅	N ₆ ^{+0.5}	S ₁	S ₂	S ₅	S ₉ ³⁾	K ₁	K ₂	
25	33.4	-	8.40	21.40	9	7.3	5.5	14.3	6.8	M8	7	M3-5 deep	23.10	-	1.1
35	50.3	56.60	13.10	29.10	12	11.0	7.0	19.4	8.6	M10	9	M3-5 deep	27.55	29.4	2.5
45	62.9	69.55	16.75	36.50	15	13.5	8.0	22.4	10.5	M12	14	M4-7 deep	33.70	36.6	4.7
55	74.2	81.60	18.95	40.75	18	13.7	9.0	28.7	12.5	M14	16	M5-8 deep	41.25	44.4	7.7
65	35.0	106.00	9.30	55.00	23	21.5	9.3	36.5	14.5	M16	18	M4-7 deep	53.80	57.0	14.5

³⁾ Thread for attachments