

Rexroth Ball Rail Systems

Low Profile Runner Blocks, Steel Version

Runner Block 1694-

Slimline, low profile

Special versions:

Runner blocks in accuracy class N (clearance and preload 0.02 C) are also available:

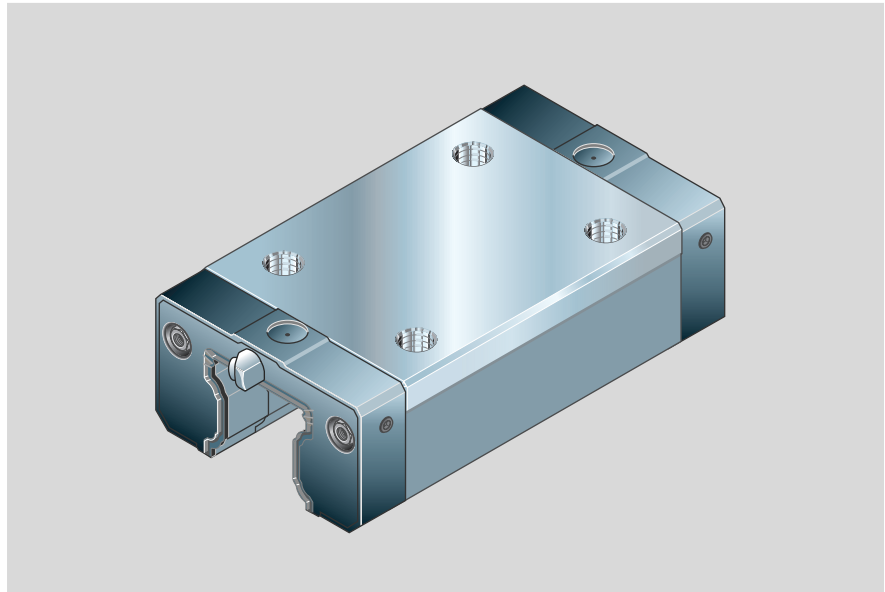
- with low friction seals (part numbers 16...4-11).

Dynamic characteristics

Speed $v_{\max} = 3 \text{ m/s}$

Acceleration $a_{\max} = 250 \text{ m/s}^2$

Other technical data, see chapter "General Technical Data and Calculations".



Part numbers

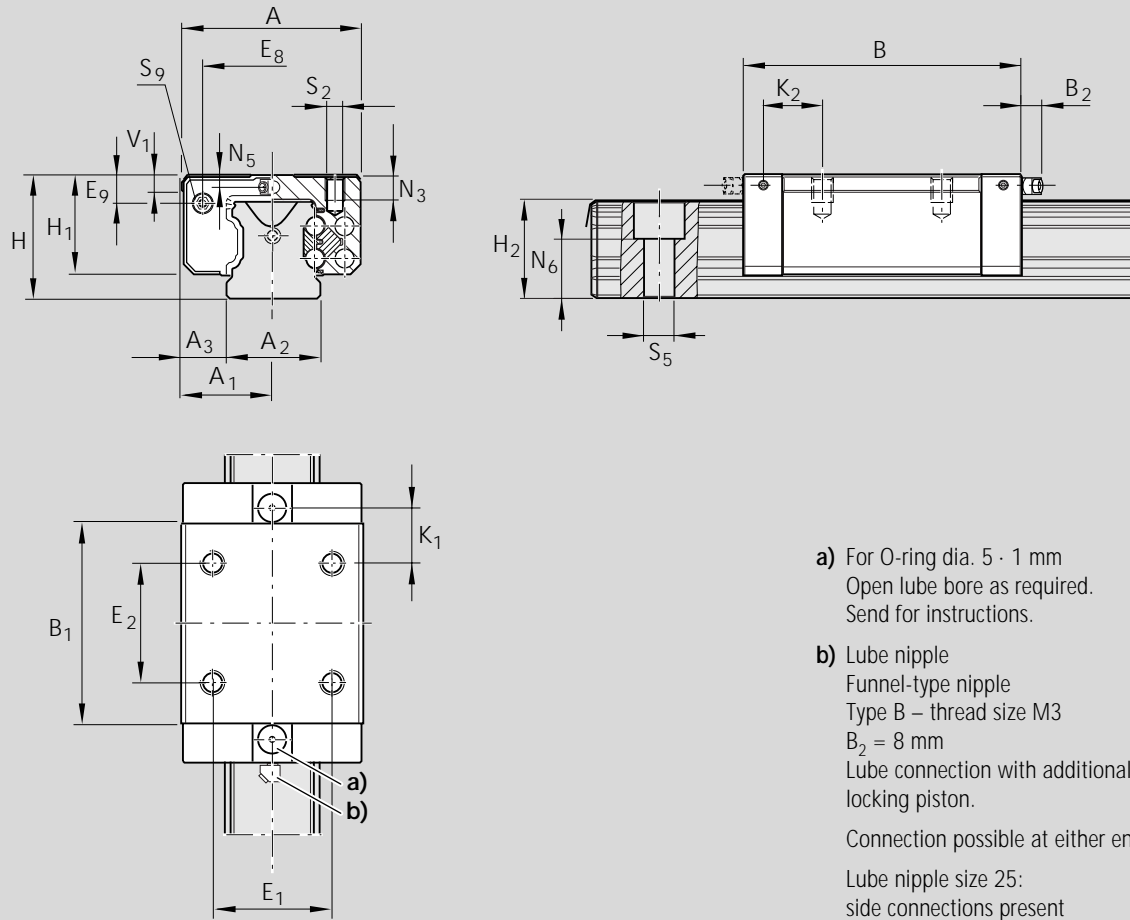
Size	Accuracy class	Part numbers for runner blocks for preload class	
		up to approx. 10 μm clearance	Preload 0.02 C
20	H	1694-893-10	1694-813-10
	N	1694-894-10	1694-814-10
25	H	1694-293-10	1694-213-10
	N	1694-294-10	1694-214-10

Note on dynamic load capacities and moments (see table)

Determination of dynamic load capacities and moments is based on a travel life of 100 000 m.

However, frequently this is determined on the basis of only 50 000 m.

In this case for comparison: multiply values C , M_t and M_L by 1.26 in accordance with Rexroth table.



Size	Dimensions (mm)																		
	A	A ₁	A ₂	A ₃	B	B ₁	H	H ₁	H ₂ ¹⁾	H ₂ ²⁾	V ₁	E ₁	E ₂	E ₈	E ₉	K ₁	K ₂	N ₃	
20	42	21	20	11.0	72.5	49.6	28	23.0	20.7	20.55	6.0	32	32	30.5	5.6	13.0	–	6.3	
25	48	24	23	12.5	81.0	57.8	33	26.5	24.4	24.25	7.5	35	35	38.3	8.5	16.6	17.0	7.0	

¹⁾ Dimension H₂ with rail seal cover strip

²⁾ Dimension H₂ without rail seal cover strip.

Size	Dimensions (mm)						Mass (kg)	Load capacities (N)		Moments (Nm)			
	N ₅	N ₆ ^{±0.5}	S ₂	S ₅	S ₉	C dyn.		C ₀ stat.	M _t		M _L		
									dyn.	stat.	dyn.	stat.	
20	3.6	13.2	M5	6.0	M3-5 deep	0.30	14 500	24 400	190	310	100	165	
25	4.1	15.2	M6	7.0	M3-5 deep	0.45	22 800	30 400	320	430	180	240	