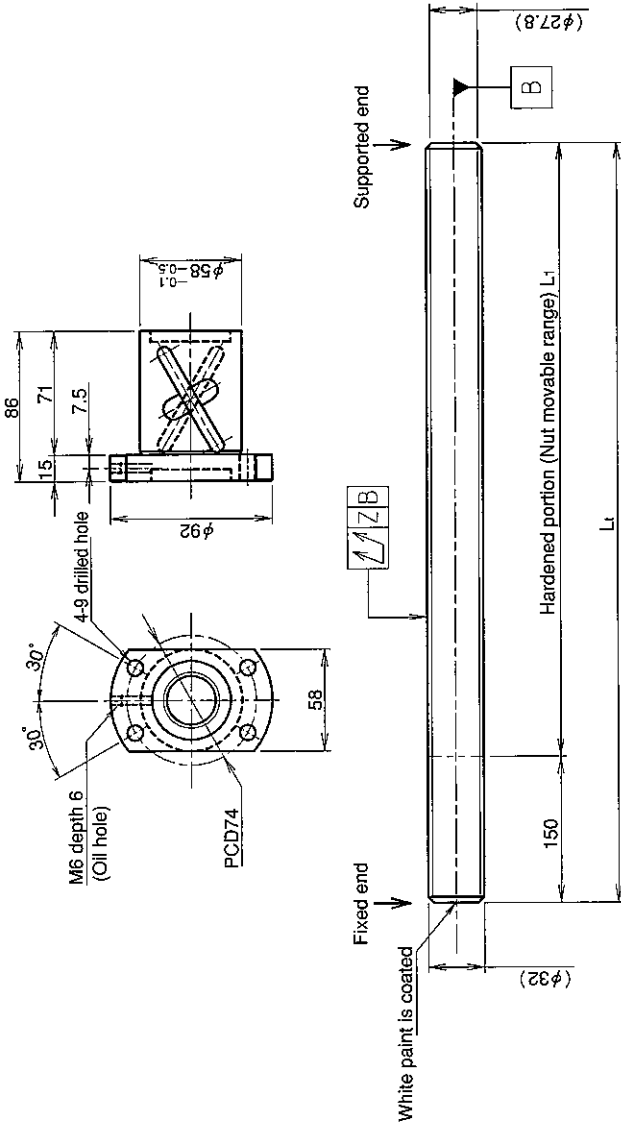


UNFINISHED SHAFT ENDS

Screw shaft diameter $\phi 32$, Lead 32 (U nut)

(Unit : mm)



Ball screw specifications

Screw shaft dia.	32	Basic dynamic load rating	14600N
Lead	32	Basic static load rating	38900N
Thread direction	Right-hand	Lubricant	Alvania Grease No.2
Number of circuits	1.5turn 2circuitt	Surface treatment	Phosphate coating
Ball diameter	4.7625		

Model No.	Axial clearance	L1	Lt	Z	Wiper
GY3232BS-HUBR-1000A	~0.150	850	1000	0.120	Brush wiper
GY3232BS-HUBR-2000A		1850	2000	0.240	
GY3232BS-HUBR-3000A		2850	3000	0.640	

Table of optional specifications for each model

Additional machining of shaft end	Surface treatment (Note 1)	Difference of grease	Direction of nut removal	Wiper
○	○	○	○	○

(Note 1) The above-mentioned surface treatment is LD treatment (coating thickness : 1 to 2 μ m).

Notation of standard rolled ball screw

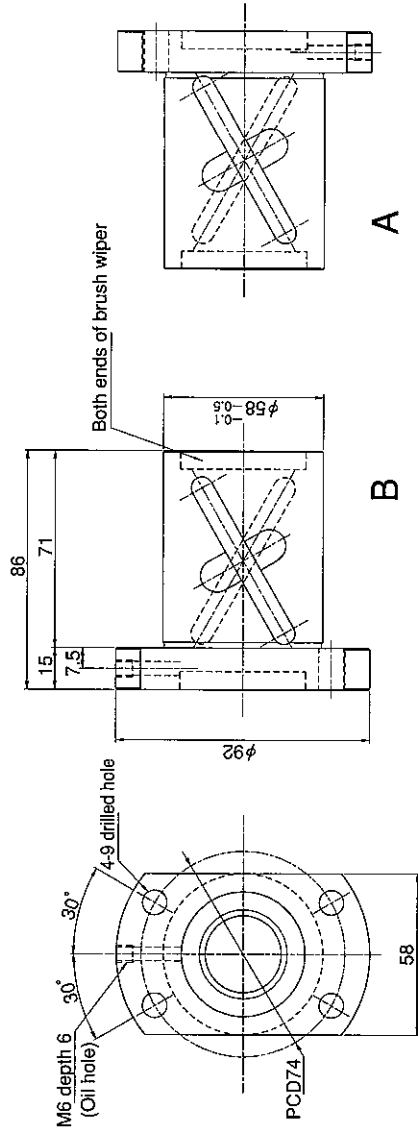
- Standard length shaft without end machining (Matched screw shaft and nut)
GY3232BS-HUBR-□□□□X□□□□□-CAY
 - Nut only without screw shaft
GY3232BS-HUBR
 - Screw shaft only without end machining
GY3232ZZ-ZZZZ-□□□□Y□□□□□-CAY
- Overall length Thread length

SHAFT END FINISH ORDERING SHEET

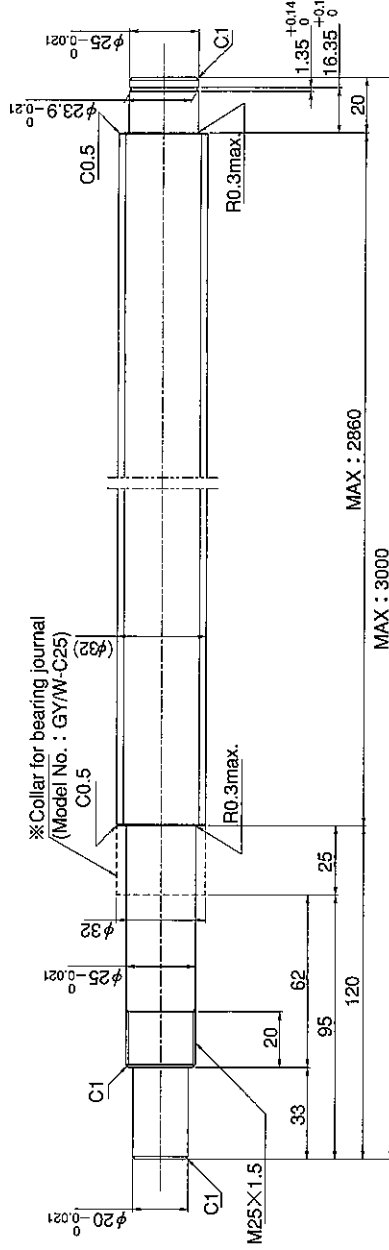
Screw shaft diameter $\phi 32$, Lead 32 (U nut)

(Unit : mm)

GY3232BS-HUBR- X -CAY



Select the orientation of nut flange by circling A or B.
No marking means "B" orientation as default.



※ Please place an order for collar separately.

Applicable Support Unit

Direct mount : BUK-25A (Fixed end unit + Supported end unit) Refer to Page.408

Circle flange : BUM-25 (Fixed end unit + Supported end bearing) Refer to Page.415

Company Name	
Telephone	Name of Person in Charge
Company Address	