

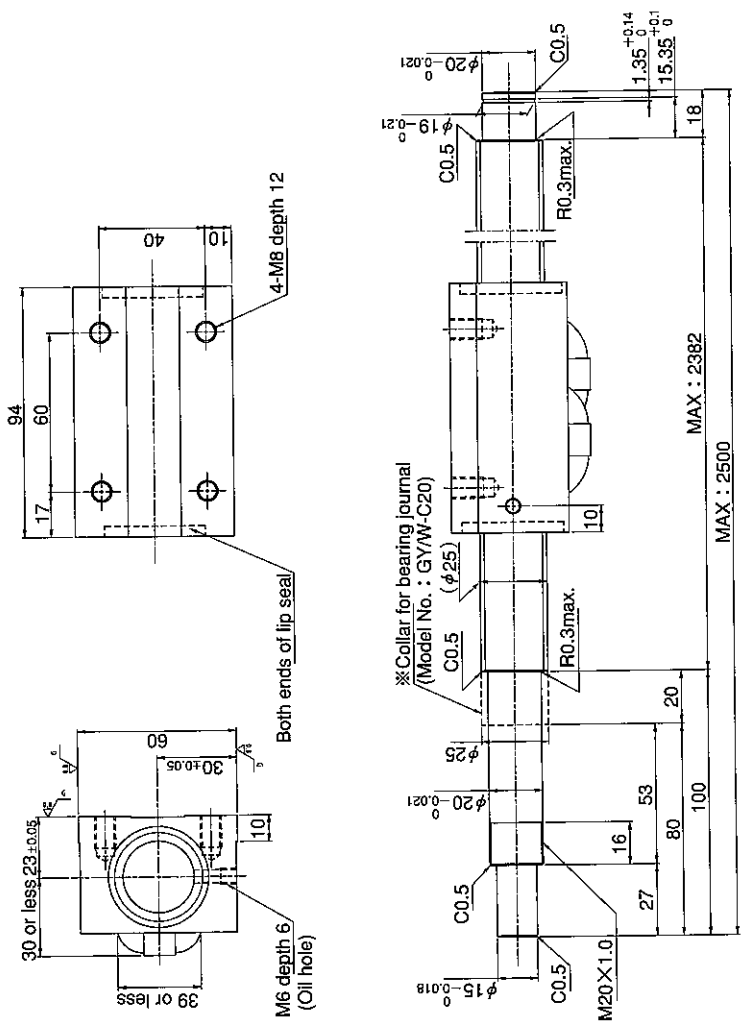
KURODA Standard Rolled Ball Screw : GY Series (Accuracy grade C10)

SHAFT END FINISH ORDERING SHEET

Screw shaft diameter $\phi 25$, Lead 10 (K nut)

(Unit : mm)

GY2510ES-NKLR- X -CAY



※ Please place an order for collar separately.
 Applicable Support Unit
 Direct mount : BUK-20A (Fixed end unit+Supported end unit) Refer to Page.407
 Circle flange : BUM-20 (Fixed end unit+Supported end bearing) Refer to Page.414

Company Name	
Telephone	Name of Person in Charge
Company Address	

Refer to page 24 for NOTATION OF MODEL NUMBER.