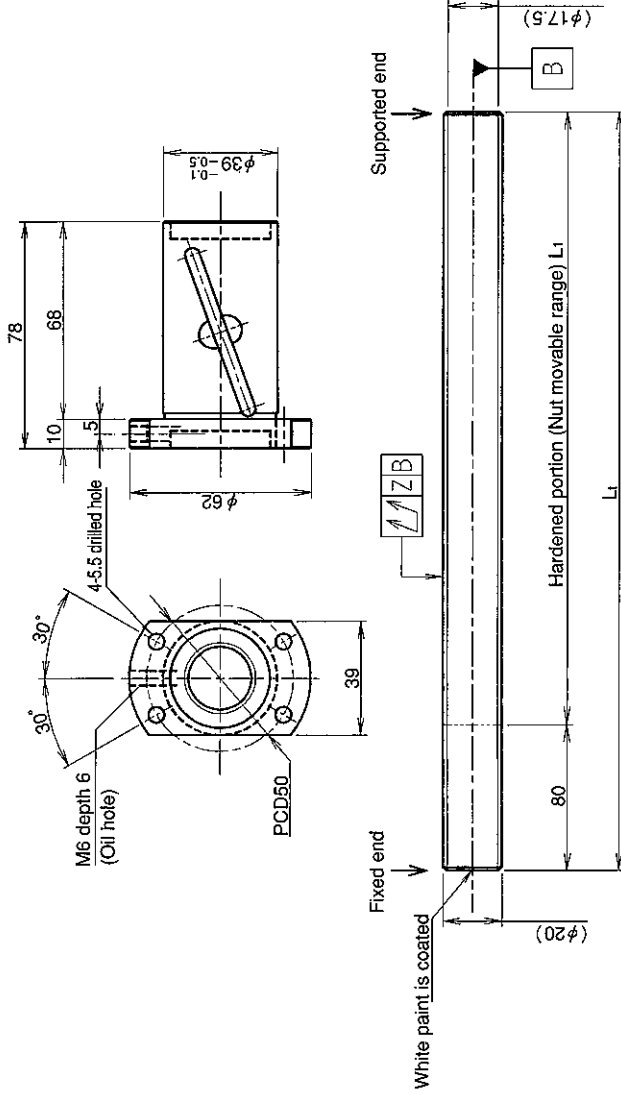


UNFINISHED SHAFT ENDS

Screw shaft diameter $\phi 20$, Lead 20 (U nut)

(Unit : mm)



Ball screw specifications

Screw shaft dia.	20	Basic dynamic load rating	6200N
Lead	20	Basic static load rating	14700N
Thread direction	Right-hand	Lubricant	Alvania Grease No.2
Number of circuits	2.5turn 1circuit	Surface treatment	Phosphate coating
Ball diameter	3.175		

Model No.	Axial clearance	L ₁	L ₁	Z	Wiper
GY2020DS-HULR-0600A		520	600	0.140	
GY2020DS-HULR-1200A	~0.100	1120	1200	0.240	Lip seal
GY2020DS-HULR-2000A		1920	2000	0.640	

Table of optional specifications for each model

Additional machining of shaft end	Surface treatment (Note 1)	Difference of grease	Direction of nut removal	Wiper removal
<input type="radio"/>	<input type="radio"/>	<input type="radio"/>	<input type="radio"/>	<input type="radio"/>

(Note 1) The above-mentioned surface treatment is LD treatment (coating thickness : 1 to 2 μ m).

Notation of standard rolled ball screw

- Standard length shaft without end machining (Matched screw shaft and nut)
GY2020DS-HULR-□□□□X□□□□□-CAY
- Nut only without screw shaft
GY2020DS-HULR
- Screw shaft only without end machining
GY2020ZZ-ZZZZ-□□□□□□□□□□

- With end machining specified on your drawing (Matched screw shaft and nut)
GY2020DS-HULR-□□□□X□□□□□-CAY
- With end machining specified on your drawing (Screw shaft only)
GY2020ZZ-ZZZZ-□□□□Y□□□□□-CAY

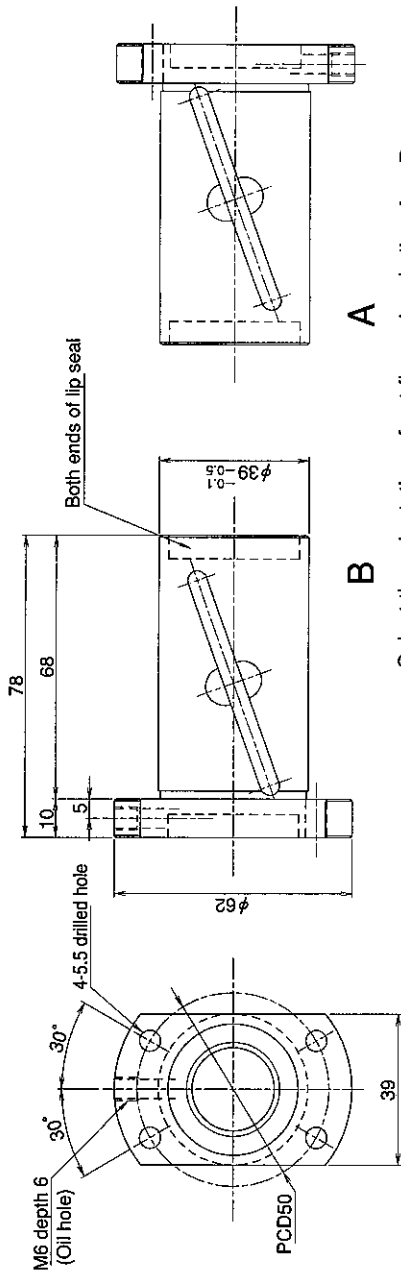
Overall length Thread length

SHAFT END FINISH ORDERING SHEET

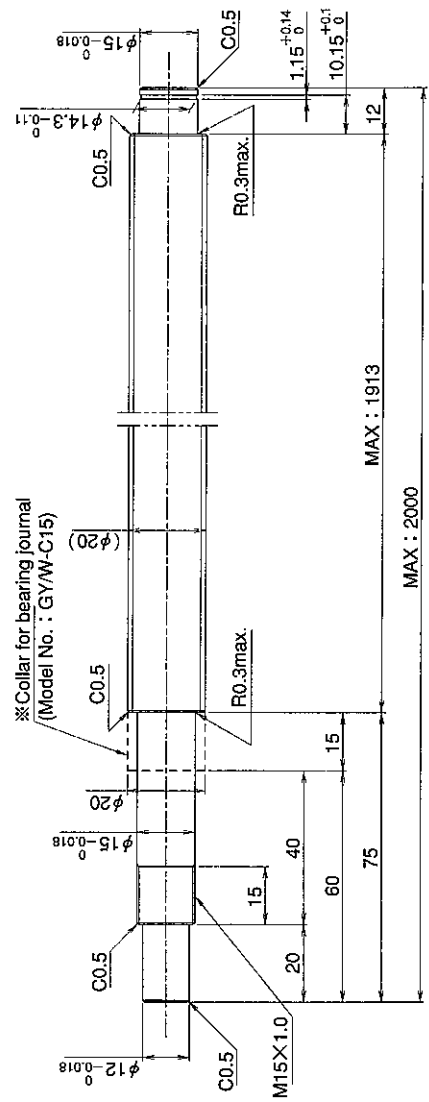
Screw shaft diameter $\phi 20$, Lead 20 (U nut)

(Unit : mm)

GY2020DS-HULR- X -CAY



A
B
 Select the orientation of nut flange by circling A or B.
 No marking means "B" orientation as default.



※Please place an order for collar separately.
 Applicable Support Unit
 Direct mount : BUK-15A (Fixed end unit+Supported end unit) Refer to Page.406
 Circle flange : BUM-15 (Fixed end unit+Supported end bearing) Refer to Page.413

Company Name	
Telephone	Name of Person in Charge
Company Address	