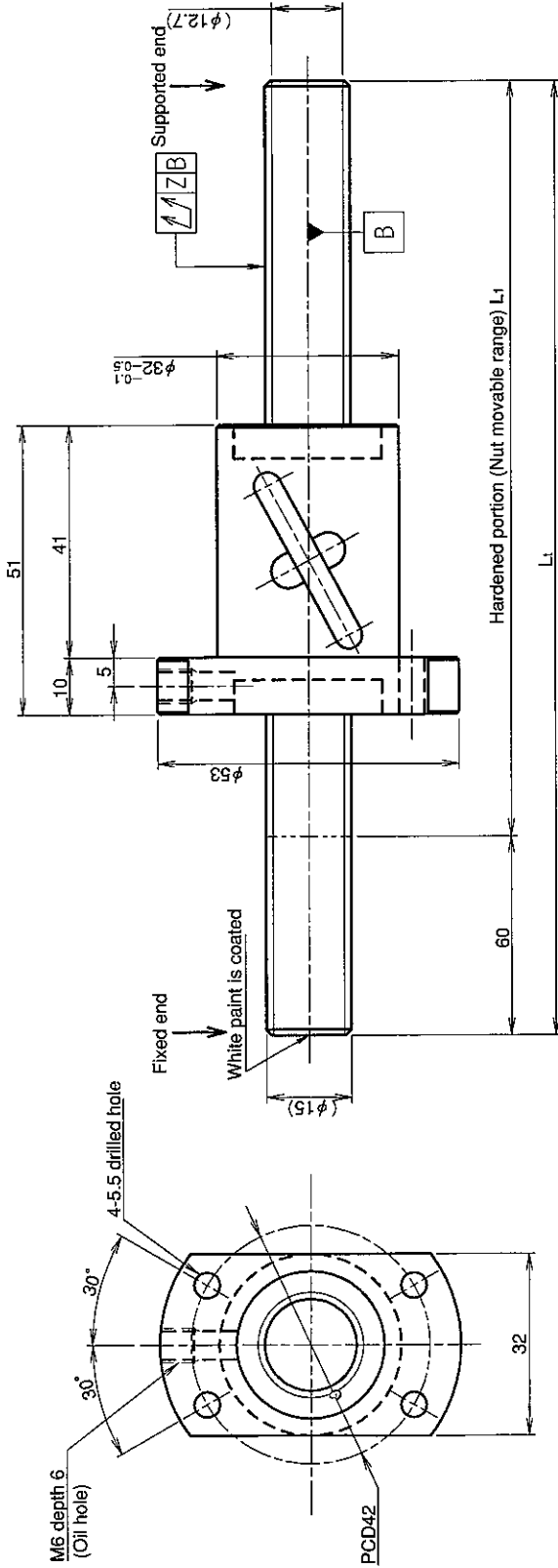


UNFINISHED SHAFT ENDS

Screw shaft diameter $\phi 15$, Lead 16 (U nut)

(Unit : mm)



Ball screw specifications

Screw shaft dia.	15	Basic dynamic load rating	4300N
Lead	16	Basic static load rating	10200N
Thread direction	Right-hand	Lubricant	Alvania Grease No.2
Number of circuits	1.5turn 2circuit	Surface treatment	Phosphate coating
Ball diameter	2.778		

Table of optional specifications for each model

Additional machining of shaft end	Surface treatment (Note 1)	Difference of grease	Direction of nut removal	Wiper removal
○	○	○	○	○

(Note 1) The above-mentioned surface treatment is LD treatment (coating thickness : 1 to 2 μ m).

Model No.	Axial clearance	L ₁	L _t	Z	Wiper
GY1516BS-HULR-0600A	~0.100	540	600	0.140	Lip seal
GY1516BS-HULR-1200A		1140	1200	0.400	

Notation of standard rolled ball screw

- Standard length shaft without end machining (Matched screw shaft and nut)
GY1516BS-HULR-□□□□X□□□□□□□□-CAY
 - Nut only without screw shaft
GY1516BS-HULR
 - Screw shaft only without end machining
GY1516ZZ-ZZZZ-□□□□□□□□□□
- Overall length Thread length

