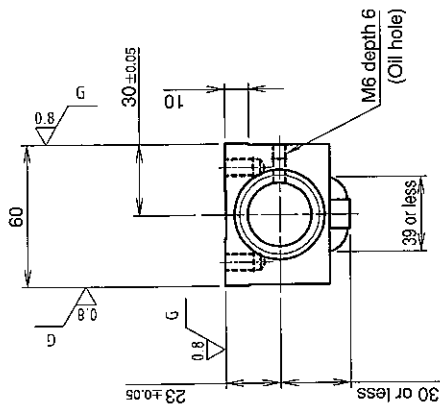
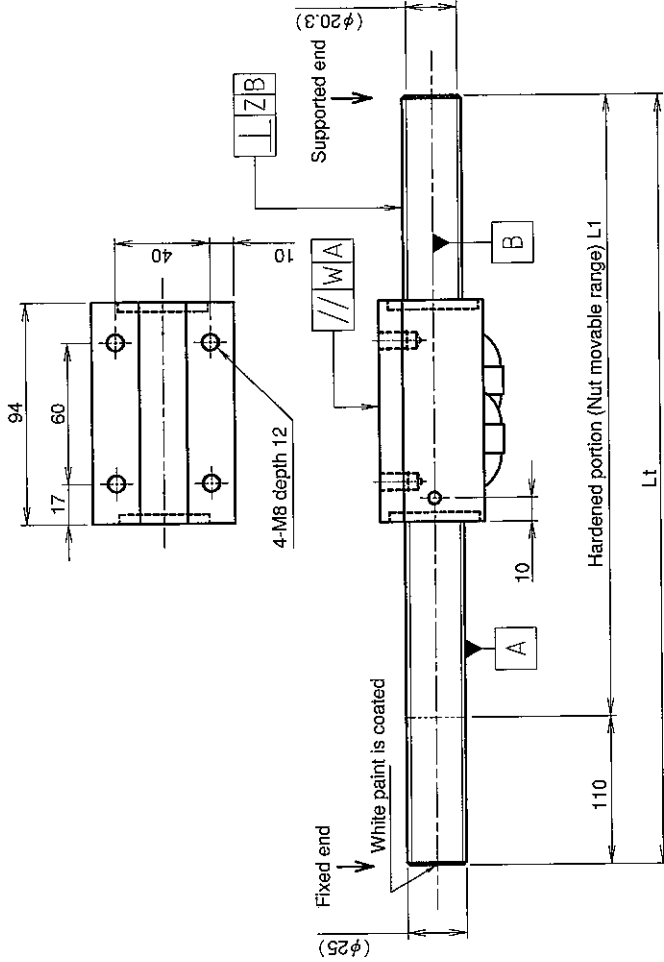


UNFINISHED SHAFT ENDS

Screw shaft diameter $\phi 25$, Lead 10 (K nut)

(Unit : mm)



Ball screw specifications

Screw shaft dia.	25	Basic dynamic load rating	27500N
Lead	10	Basic static load rating	76300N
Thread direction	Right-hand	Lubricant	Alvania Grease No.2
Number of circuits	2.5turn 2circ/lt	Surface treatment	Phosphate coating (Nut only)
Ball diameter	6.350		

Table of optional specifications for each model

Additional machining of shaft end	Surface treatment (Note 1)	Difference of grease	Direction of nut removal	Wiper
○	○	○	○	○

(Note 1) The above-mentioned surface treatment is LD treatment (coating thickness : 1 to 2 μ m).

Model No.	Axial clearance	L _t	L _t	W	Z	Wiper
GW2510ES-NKLR-1000A	~0.070	890	1000	0.017	0.080	Lip seal
GW2510ES-NKLR-2000A		1890	2000		0.200	
GW2510ES-NKLR-2500A		2390	2500		0.260	

- Notation of standard rolled ball screw**
- Standard length shaft without end machining
 - GW2510ES-NKLR-□□□□A
 - With end machining specified on your drawing
 - GW2510ES-NKLR-□□□□X□□□□-C7Y

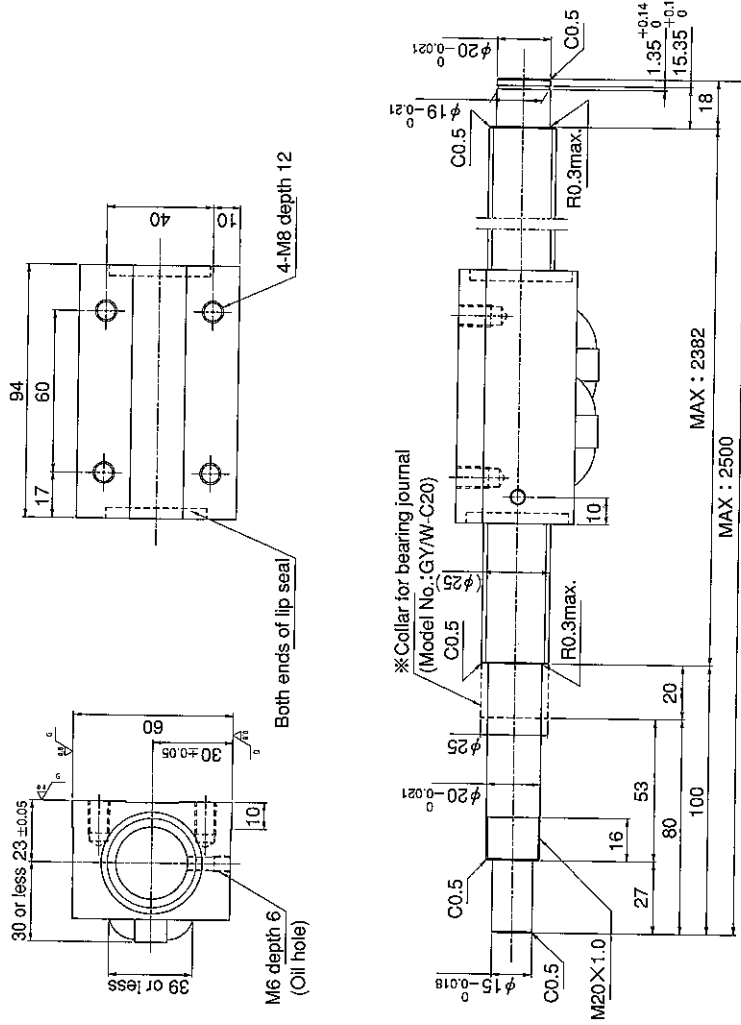
Overall length Thread length

SHAFT END FINISH ORDERING SHEET

Screw shaft diameter $\phi 25$, Lead 10 (K nut)

(Unit : mm)

GW2510ES-NKLR- X -C7Y



※Please place an order for collar separately.

Applicable Support Unit

Direct mount : BUK-20A (Fixed end unit+Supported end unit) Refer to Page.407

Circle flange : BUM-20 (Fixed end unit+Supported end bearing) Refer to Page.414

Company Name	
Telephone	Name of Person in Charge
Company Address	

Refer to page 24 for NOTATION OF MODEL NUMBER.