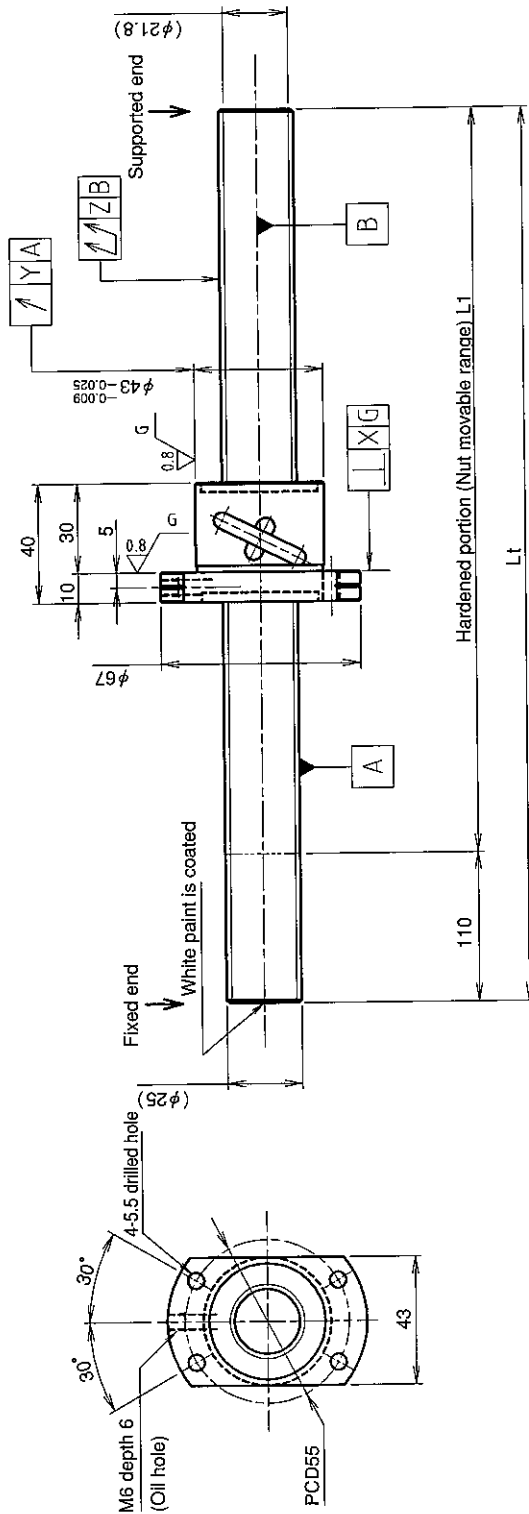


UNFINISHED SHAFT ENDS

Screw shaft diameter $\phi 25$, Lead 5 (U nut)

(Unit : mm)



Ball screw specifications

Screw shaft dia.	25	Basic dynamic load rating	6600N
Lead	5	Basic static load rating	18700N
Thread direction	Right-hand	Lubricant	Alvania Grease No.2
Number of circuits	2.5turn 1circuit	Surface treatment	Without
Ball diameter	3.175		

Table of optional specifications for each model

Additional machining of shaft end	Surface treatment (Note 1)	Difference of grease	Direction of nut removal	Wiper
○	○	○	○	○

(Note 1) The above-mentioned surface treatment is LD treatment (coating thickness : 1 to 2 μ m).

Model No.	Axial clearance	L ₁	X	Y	Z	Wiper
GW2505DS-HULR-1000A		890	0.025	0.025	0.080	
GW2505DS-HULR-2000A	~0.030	1890	0.025	0.025	0.200	Lip seal
GW2505DS-HULR-2500A		2390			0.260	

- Notation of standard rolled ball screw
- Standard length shaft without end machining
 - GW2505DS-HULR-□□□□A
 - With end machining specified on your drawing
 - GW2505DS-HULR-□□□□X□□□□-C7Y

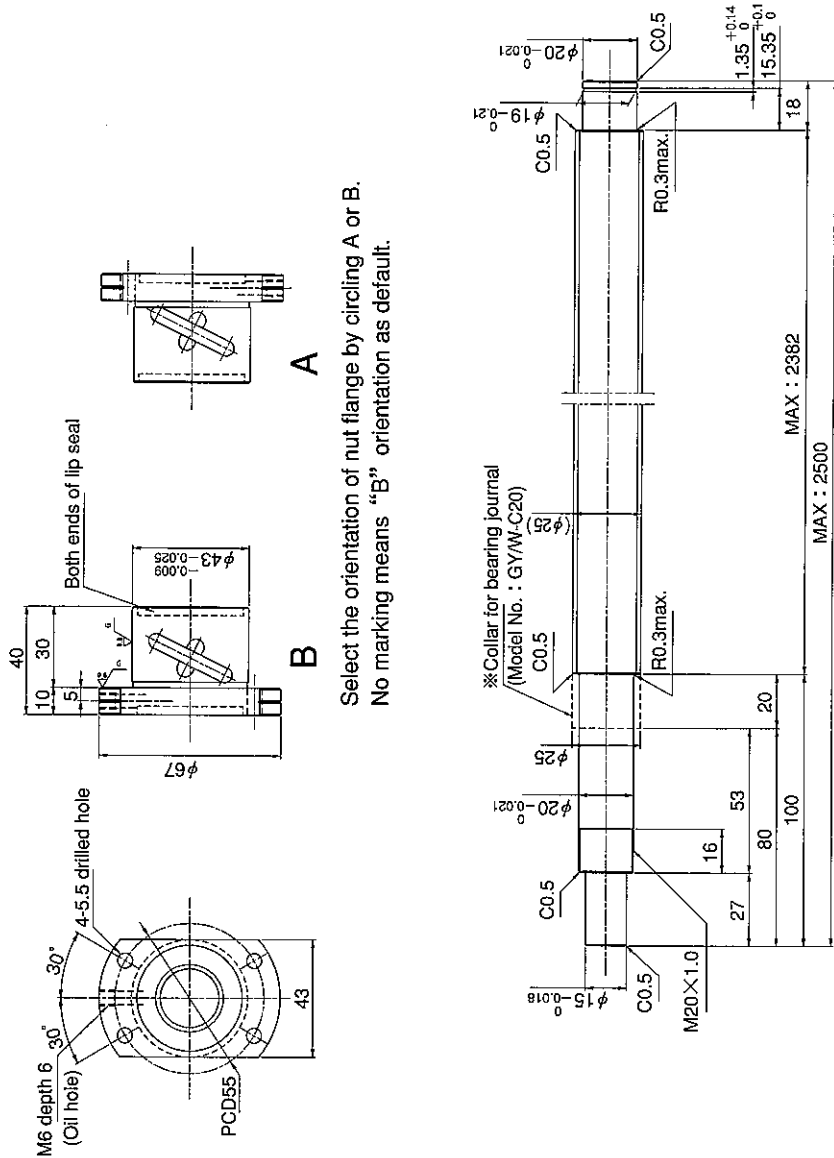
Overall length Thread length

SHAFT END FINISH ORDERING SHEET

Screw shaft diameter $\phi 25$, Lead 5 (U nut)

(Unit : mm)

GW2505DS-HULR- X -C7Y



Select the orientation of nut flange by circling A or B.
No marking means "B" orientation as default.

※Please place an order for collar separately.
Applicable Support Unit
Direct mount : BUK-20A (Fixed end unit+Supported end unit) Refer to Page.407
Circle flange : BUM-20 (Fixed end unit+Supported end bearing) Refer to Page.414

Company Name	
Telephone	Name of Person in Charge
Company Address	

Refer to page 24 for NOTATION OF MODEL NUMBER.