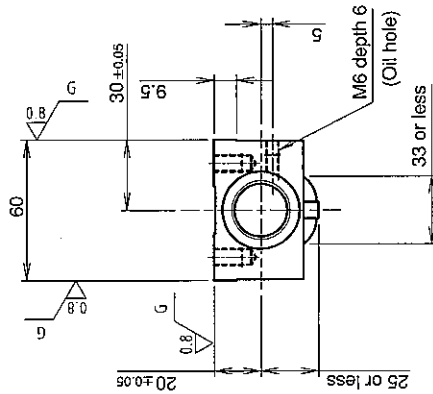
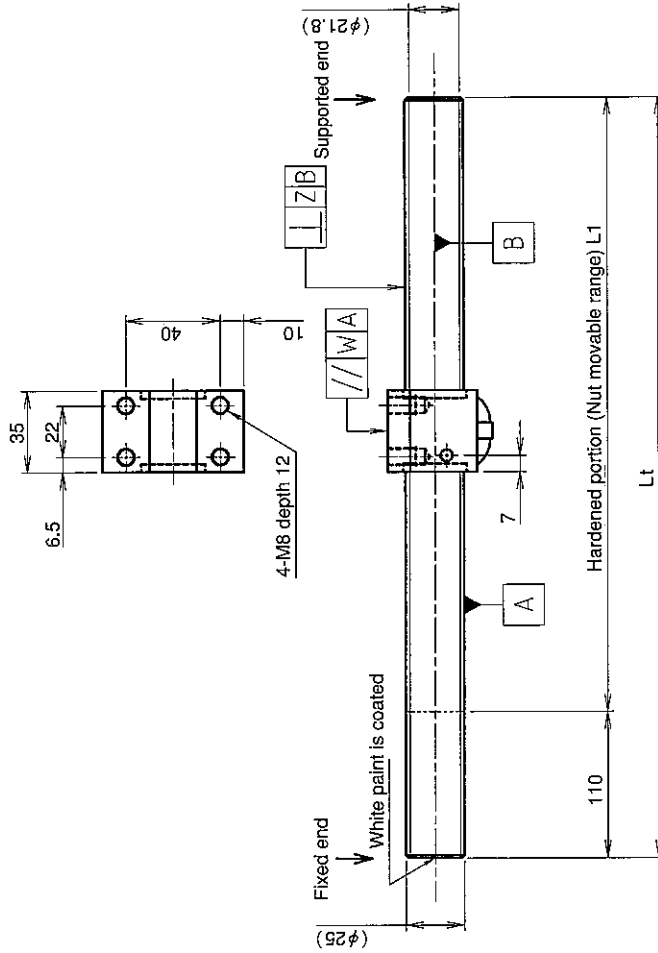


**UNFINISHED SHAFT ENDS**

**Screw shaft diameter  $\phi 25$ , Lead 5 (K nut)**

(Unit : mm)



**Ball screw specifications**

Screw shaft dia.	25	Basic dynamic load rating	6600N
Lead	5	Basic static load rating	18700N
Thread direction	Right-hand	Lubricant	Alvania Grease No.2
Number of circuits	2.5turn 1circuit	Surface treatment	Phosphate coating
Ball diameter	3.175		(Nut only)

**Table of optional specifications for each model**

Additional machining of shaft end	Surface treatment (Note 1)	Difference of grease	Direction of nut removal	Wiper
○	○	○	○	○

(Note 1) The above-mentioned surface treatment is LD treatment (coating thickness : 1 to 2  $\mu$ m).

Model No.	Axial clearance	L <sub>1</sub>	L <sub>t</sub>	W	Z	Wiper
GW2505DS-NKLR-1000A	~0.030	890	1000	0.017	0.080	Lip seal
GW2505DS-NKLR-2000A		1890	2000		0.200	
GW2505DS-NKLR-2500A		2390	2500		0.260	

- Notation of standard rolled ball screw
- Standard length shaft without end machining
  - GW2505DS-NKLR-□□□□A
  - With end machining specified on your drawing
  - GW2505DS-NKLR-□□□□X□□□□-C7Y

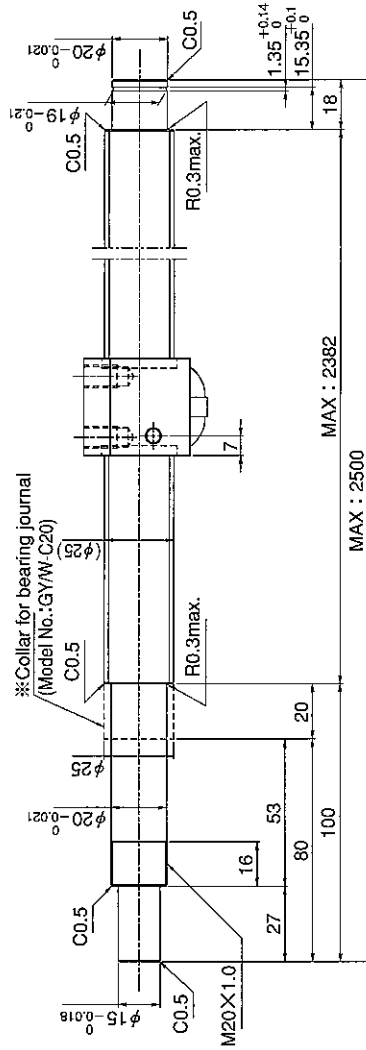
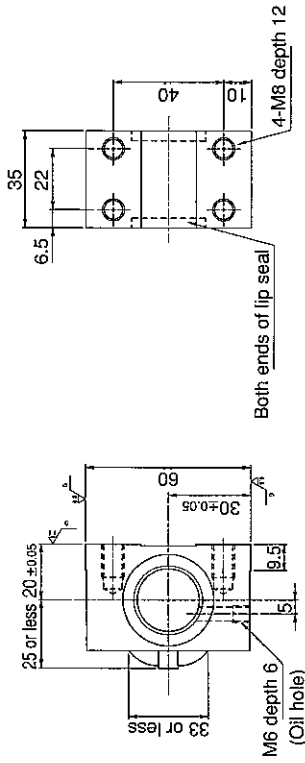
Overall length Thread length

**SHAFT END FINISH ORDERING SHEET**

Screw shaft diameter  $\phi 25$ , Lead 5 (K nut)

(Unit : mm)

GW2505DS-NKLR-    X    -C7Y



※ Please place an order for collar separately.  
Applicable Support Unit

Direct mount : BUIK-20A (Fixed end unit+Supported end unit) Refer to Page.407

Circle flange : BUM-20 (Fixed end unit+Supported end bearing) Refer to Page.414

Company Name	
Telephone	Name of Person in Charge
Company Address	

Refer to page 24 for NOTATION OF MODEL NUMBER.