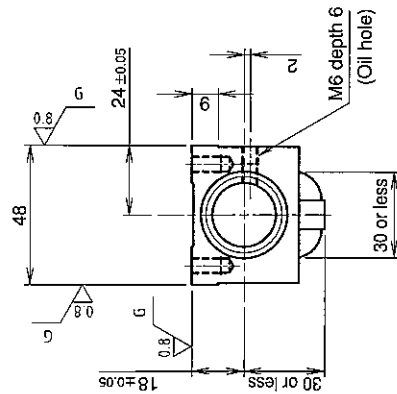
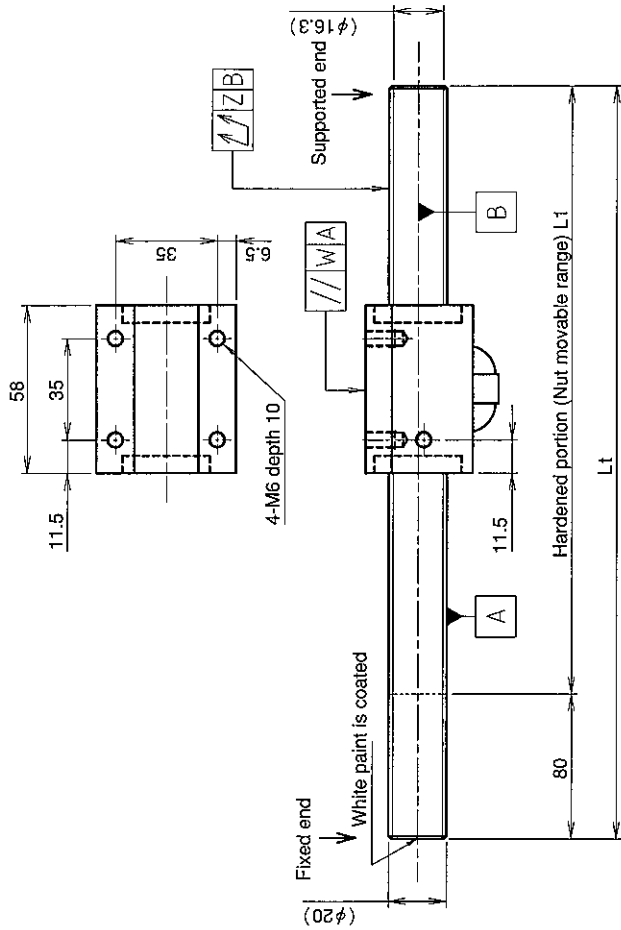


UNFINISHED SHAFT ENDS

Screw shaft diameter $\phi 20$, Lead 10 (K nut)

(Unit : mm)



Ball screw specifications

Screw shaft dia.	20	Basic dynamic load rating	10600N
Lead	10	Basic static load rating	22700N
Thread direction	Right-hand	Lubricant	Alvania Grease No.2
Number of circuits	2.5turn 1circuit	Surface treatment	Phosphate coating
Ball diameter	4.7625		(Nut only)

Table of optional specifications for each model

Additional machining of shaft end	Surface treatment (Note 1)	Difference of grease	Direction of nut removal	Wiper
○	○	○	○	○

(Note 1) The above-mentioned surface treatment is LD treatment (coating thickness : 1 to 2 μ m).

Model No.	Axial clearance	L _t	L ₁	L _t	W	Z	Wiper
GW2010DS-NKLR-0600A		600	520			0.070	
GW2010DS-NKLR-1200A	~0.050	1200	1120	0.017		0.120	Lip seal
GW2010DS-NKLR-2000A		2000	1920			0.270	

Notation of standard rolled ball screw

- Standard length shaft without end machining
GW2010DS-NKLR-□□□□□A
- With end machining specified on your drawing
GW2010DS-NKLR-□□□□□X□□□□□-C7Y

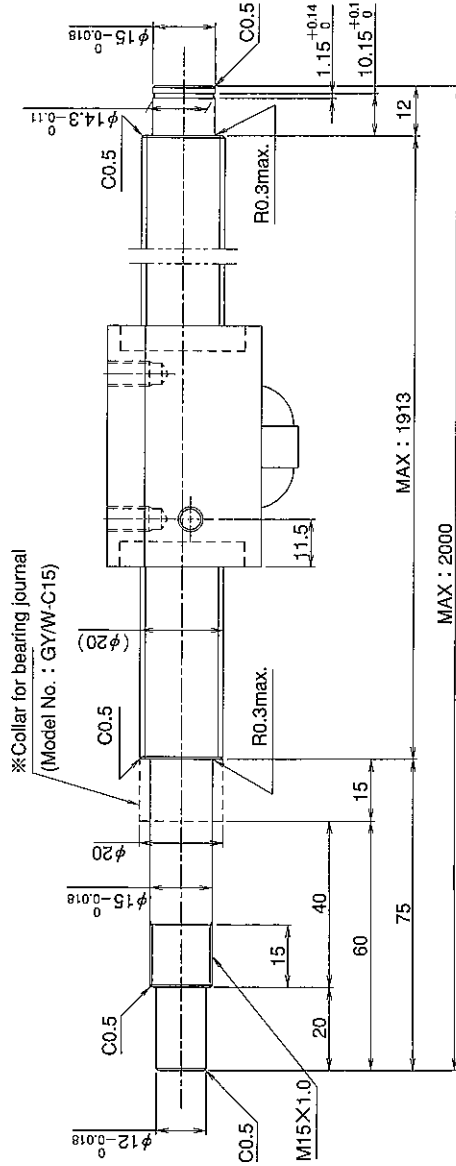
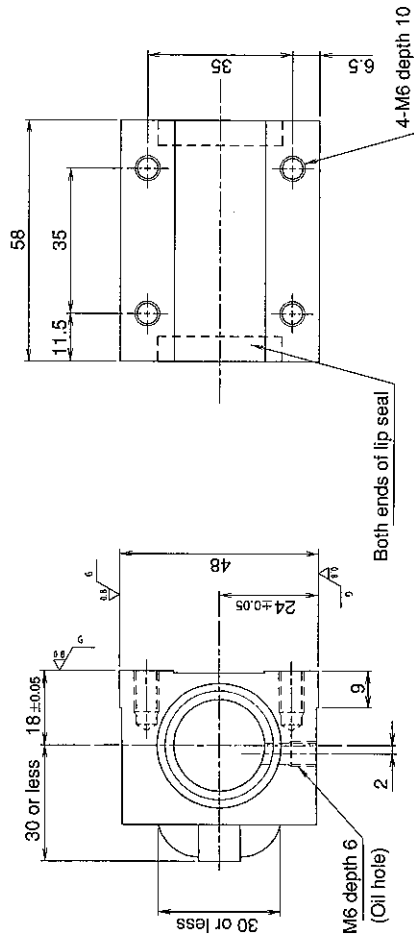
Overall length Thread length

SHAFT END FINISH ORDERING SHEET

Screw shaft diameter $\phi 20$, Lead 10 (K nut)

(Unit : mm)

GW2010DS-NKLR- X -C7Y



※Collar for bearing journal
(Model No. : GY/W-C15)

※Please place an order for collar separately.

Applicable Support Unit

Direct mount : BUK-15A (Fixed end unit+Supported end unit) Refer to Page.406

Circle flange : BUM-15 (Fixed end unit+Supported end bearing) Refer to Page.413

Company Name	
Telephone	Name of Person in Charge
Company Address	