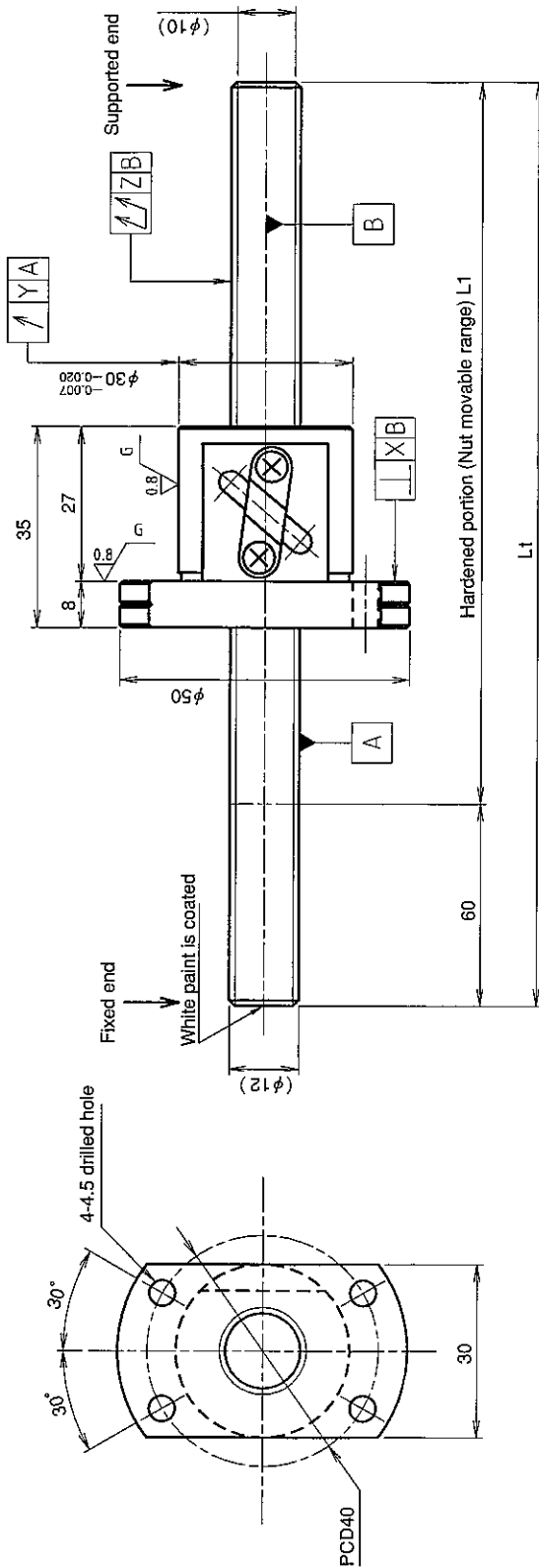


UNFINISHED SHAFT ENDS

Screw shaft diameter $\phi 12$, Lead 4 (M nut)

(Unit : mm)



Ball screw specifications

Screw shaft dia.	12	Basic dynamic load rating	2600N
Lead	4	Basic static load rating	5800N
Thread direction	Right-hand	Lubricant	Alvania Grease No.2
Number of circuits	2.5turn 1circuit	Surface treatment	Without
Ball diameter	2.3812		

Table of optional specifications for each model

Additional machining of shaft end	Surface treatment (Note 1)	Difference of grease	Direction of nut
○	○	○	○

(Note 1) The above-mentioned surface treatment is LD treatment (coating thickness : 1 to 2 μm).

Model No.	Axial clearance	L1	L1	X	Y	Z	Wiper
GW1204DS-HANR-0400A	~0.030	340	400	0.020	0.020	0.080	Without
GW1204DS-HANR-0800A		740	800			0.200	

- Notation of standard rolled ball screw
- Standard length shaft without end machining
GW1204DS-HANR-□□□□□A
 - With end machining specified on your drawing
GW1204DS-HANR-□□□□□X□□□□□-C7Y

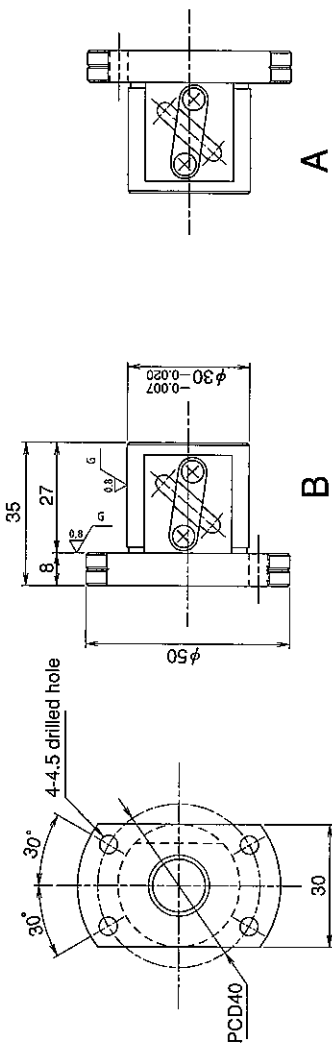
Overall length Thread length

SHAFT END FINISH ORDERING SHEET

Screw shaft diameter ϕ 12, Lead 4 (M nut)

(Unit : mm)

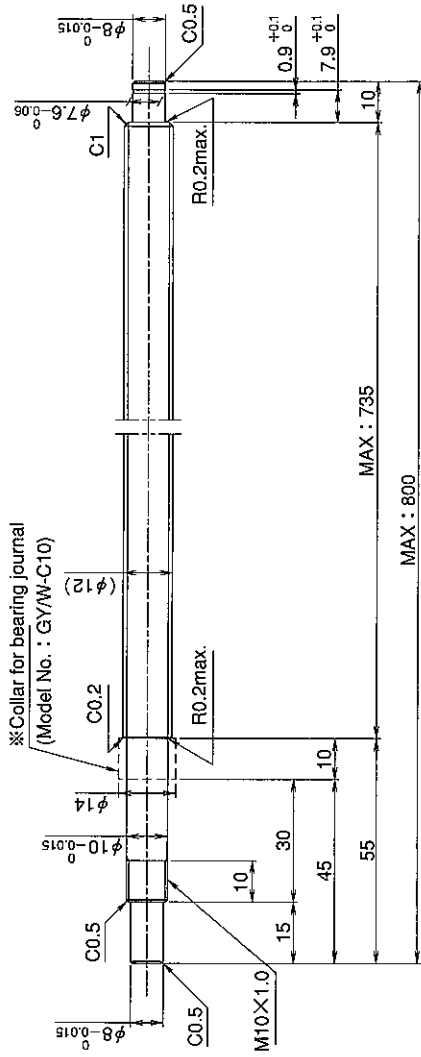
GW1204DS-HANR- X -C7Y



A

B

Select the orientation of nut flange by circling A or B.
No marking means "B" orientation as default.



※Please place an order for collar separately.
Applicable Support Unit
Direct mount : BUK-10A (Fixed end unit+Supported end unit) Refer to Page.404
Circle flange : BUM-10 (Fixed end unit+Supported end bearing) Refer to Page.411

Company Name	
Telephone	Name of Person in Charge
Company Address	

Refer to page 24 for NOTATION OF MODEL NUMBER.