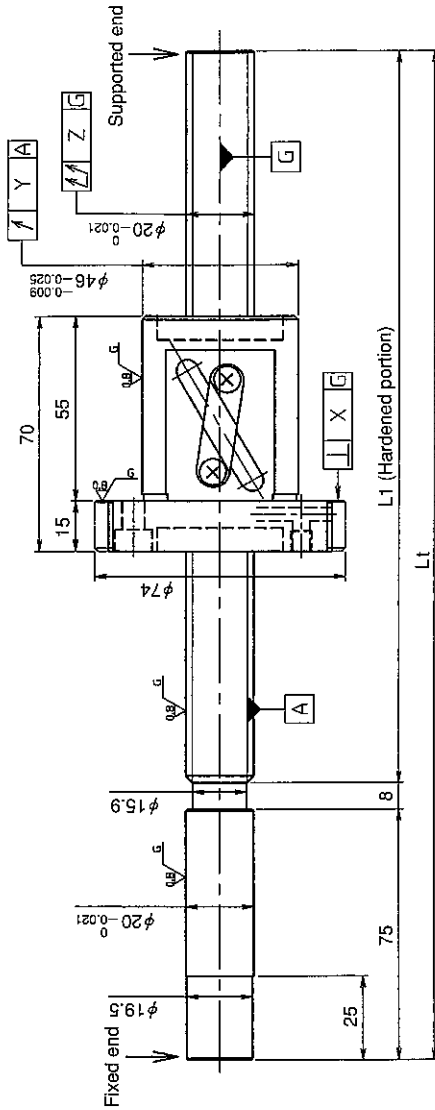
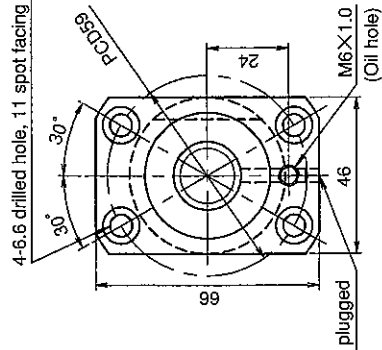


UNFINISHED SHAFT ENDS

Screw shaft diameter $\phi 20$, Lead 20

4-6.6 drilled hole, 1.1 spot facing depth 6.5



(Unit : mm)

Notation of standard ground ball screw

- Standard length shaft without end machining
- GE2020AS-BALR-□□□□A
- GG2020AS-BALR-□□□□A

- With end machining specified on your drawing
- GE2020AS-□A□R-□□□□□□□□-C7M
- GG2020AS-□A□R-□□□□□□□□-C5□

Overall length Thread length

Model No.	Axial clearance	L ₁	L _t	X	Y	Z	Preload torque (N·cm)		Lead accuracy		Wiper	Mass (kg)			
							±Ec	ec	±Ec	ec					
GE2020AS-BALR-1005A	~0.030 (M)	922	1005	0.018	0.030	0.210	—	—	—	—	—	3.51			
GE2020AS-BALR-1505A		1422	1505									0.02700	—	—	4.83
GE2020AS-BALR-1805A		1722	1805									0.150	0.027	—	5.62
*GG2020AS-BALR-1005A	~0.005 (F)	922	1005	0.011	0.015	0.150	~4.0	~4.0	0.027	0.018	Lip seal	3.51			
GG2020AS-BALR-1505A		1422	1505									0.035	0.054	—	4.83
GG2020AS-BALR-1805A		1722	1805									0.040	0.065	0.018	5.62

● JIS B 1192-1987 (GG series) applies to accuracy standard values shown in the above-mentioned table.

● Support unit : BUK-15A (BUK-15F, BUK-15S) and BUM-15 is recommended. (Refer to P.398)

● Product with axial clearance ~0.005 (F) shown in the table may be partially preloaded.

● Preload torque shown in the table is a value before greasing.

● The grease is contained inside of nut only at the time of delivery. When using it, apply lubricant.

● For asterisked * model with unworked shaft ends equivalent to lead accuracy grade C3, contact KURODA.

Table of optional specifications for each model

Series	Additional machining of shaft end	Axial clearance adjustment (Note 2)	Surface treatment (Note 1)	Difference of grease	Direction of nut	Wiper removal
GE	○	X	○	○	○	○
GG	○	○	○	○	○	○

(Note 1) The above-mentioned surface treatment is LD treatment (coating thickness : 1 to 2 μm).

(Note 2) For axial clearance adjustment for GG series, contact KURODA.

Ball screw specifications

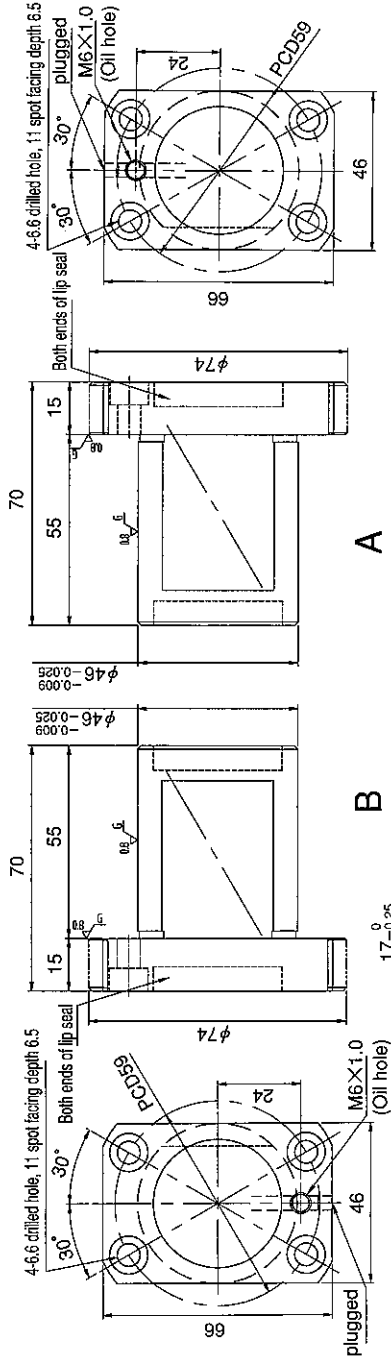
Screw shaft dia.	20	Axial clearance	~0.030 (M)	~0.005 (F)
Lead	20	Basic dynamic load rating	9200N	
Thread direction	Right-hand	Basic static load rating	16200N	
Number of circuits	1.5turn 1circuit	Spacer ball	—	
Ball diameter	4.7625	Lubricant	Alvania Grease No.2	

SHAFT END FINISH ORDERING SHEET

Screw shaft diameter $\phi 20$, Lead 20

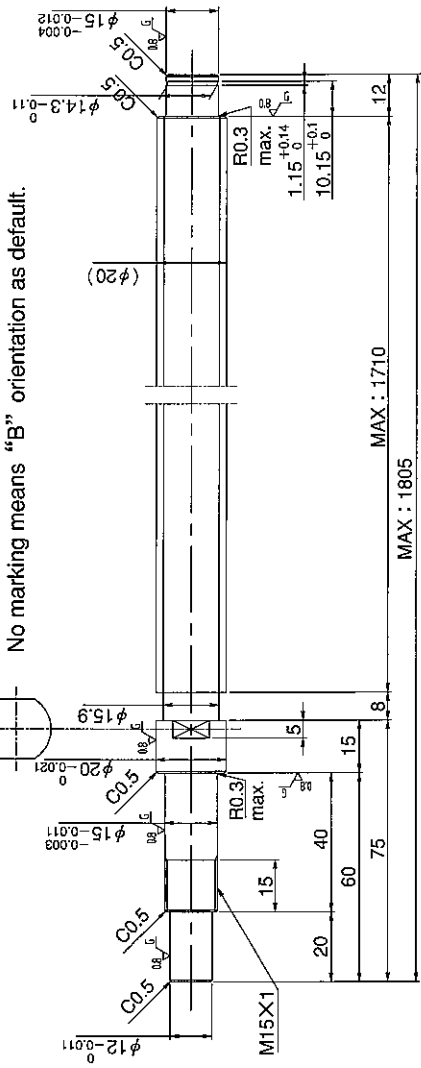
(Unit : mm)

GE2020AS-BALR- X -C7M
 GG2020AS-BALR- X -C5



A

Select the orientation of nut flange by circling A or B.
 No marking means "B" orientation as default.



Applicable Support Unit
 Direct mount : BUK-15A (Fixed end unit+Supported end unit) Refer to Page.406
 Circle flange : BUM-15 (Fixed end unit+Supported end bearing) Refer to Page.413

Company Name	
Telephone	Name of Person in Charge
Company Address	

Refer to page 24 for NOTATION OF MODEL NUMBER.