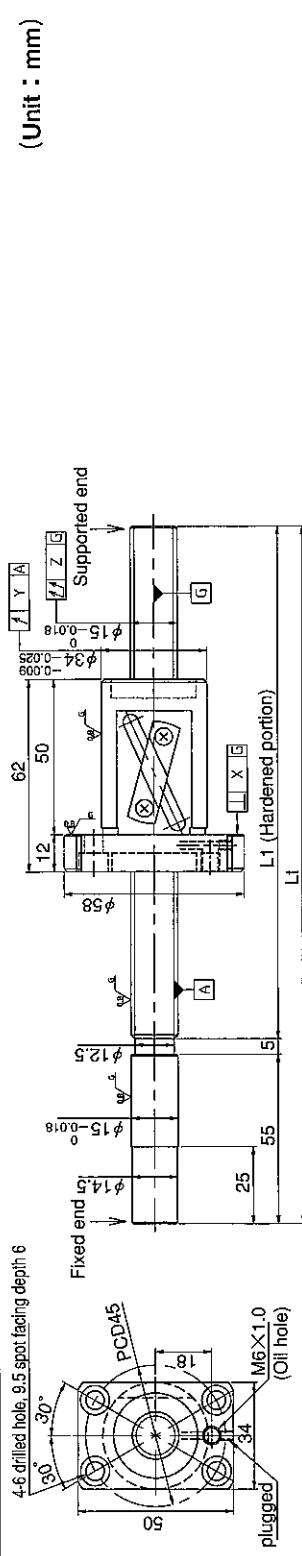


# UNFINISHED SHAFT ENDS

# Screw shaft diameter $\phi$ 15, Lead 20



(Unit : mm)

Model No.	Axial clearance	L <sub>1</sub>	L <sub>2</sub>	X	Y	Z	Preload torque (N·cm)		Lead accuracy		Wiper	Mass (kg)
							±Ec	ec	±Ec	e300		
GE1520AS-BALR-0600A	~0.030 (M)	540	600	0.018	0.030	0.210	—	—	—	—	Lip seal	1.35
GE1520AS-BALR-0900A		840	900									1.85
GE1520AS-BALR-1100A		1040	1100									2.22
GE1520AS-BALR-1300A		1240	1300									2.59
GE1520AS-BALR-1500A		1440	1500									2.96
*GG1520AS-BALR-0600A	~0.005 (F)	540	600	0.011	0.015	0.150	~3.0	~3.0	0.030	0.023	0.018	1.35
GG1520AS-BALR-0900A		840	900									1.85
GG1520AS-BALR-1100A		1040	1100									2.22
GG1520AS-BALR-1300A		1240	1300									2.59
GG1520AS-BALR-1500A		1440	1500									2.96

● JIS B 1192-1987 (GG series), applies to accuracy standard values shown in the above-mentioned table.

● Support unit : BUK-12A (BUK-12F, BUK-10S) and BUM-12 is recommended. (Refer to P.398)

● Product with axial clearance ~0.005 (F) shown in the table may be partially preloaded.

● Preload torque shown in the table is a value before greasing.

● The grease is contained inside of nut only at the time of delivery. When using it, apply lubricant.

● For asterisked \* model with unworked shaft ends equivalent to lead accuracy grade C3, contact KURODA.

### Table of optional specifications for each model

Series	Additional machining of shaft end	Axial clearance adjustment (Note 2)	Difference of grease	Direction of nut	Wiper removal
GE	○	X	○	○	○
GG	○	○	○	○	○

(Note 1) The above-mentioned surface treatment is LD treatment (coating thickness : 1 to 2 μm).

(Note 2) For axial clearance adjustment for GG series, contact KURODA.

### Ball screw specifications

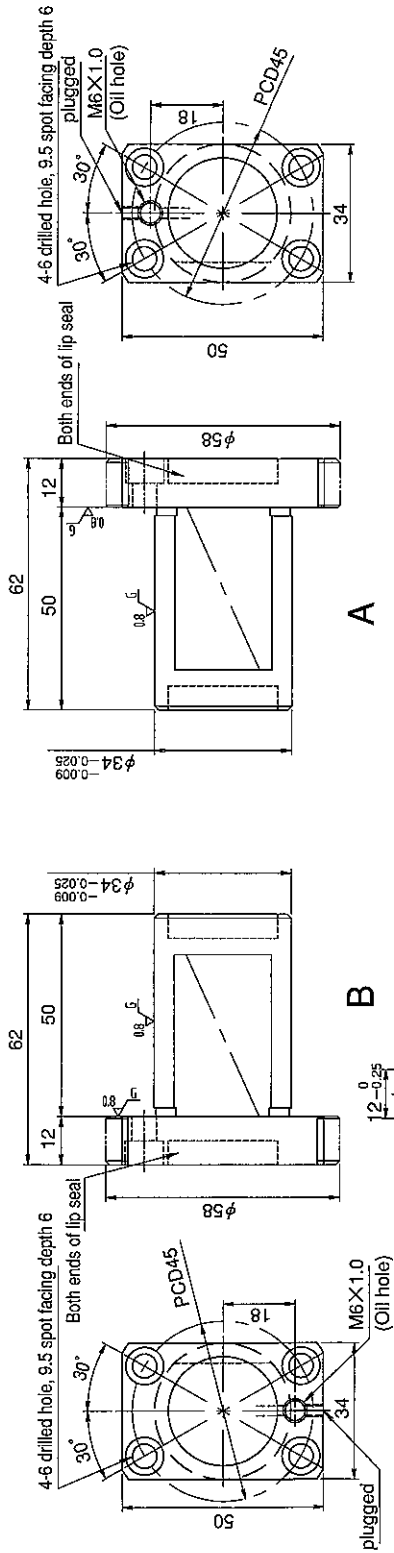
Screw shaft dia.	15	Axial clearance	~0.030 (M)	~0.005 (F)
Lead	20	Basic dynamic load rating	4400N	
Thread direction	Right-hand	Basic static load rating	7900N	
Number of circuits	1.5turn 1circuit	Spacer ball	—	
Ball diameter	3.175	Lubricant	Alvania Grease No.2	

**SHAFT END FINISH ORDERING SHEET**

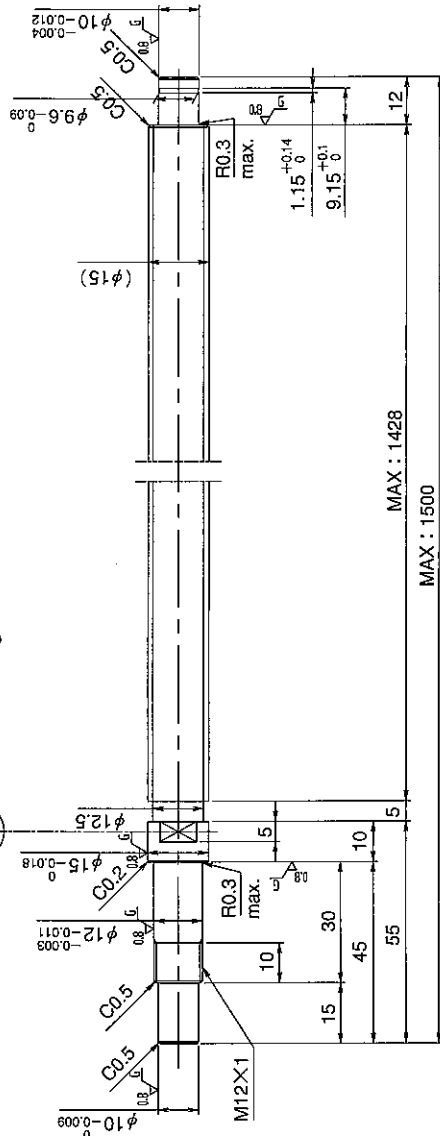
**Screw shaft diameter  $\phi$  15, Lead 20**

(Unit : mm)

GE1520AS-BALR-     X     -C7M  
 GG1520AS-BALR-     X     -C5



Select the orientation of nut flange by circling A or B.  
 No marking means "B" orientation as default.



Applicable Support Unit  
 Direct mount : BUK-12A (Fixed end unit+Supported end unit) Refer to Page.405  
 Circle flange : BUM-12 (Fixed end unit+Supported end bearing) Refer to Page.412

Company Name	
Telephone	Name of Person in Charge
Company Address	