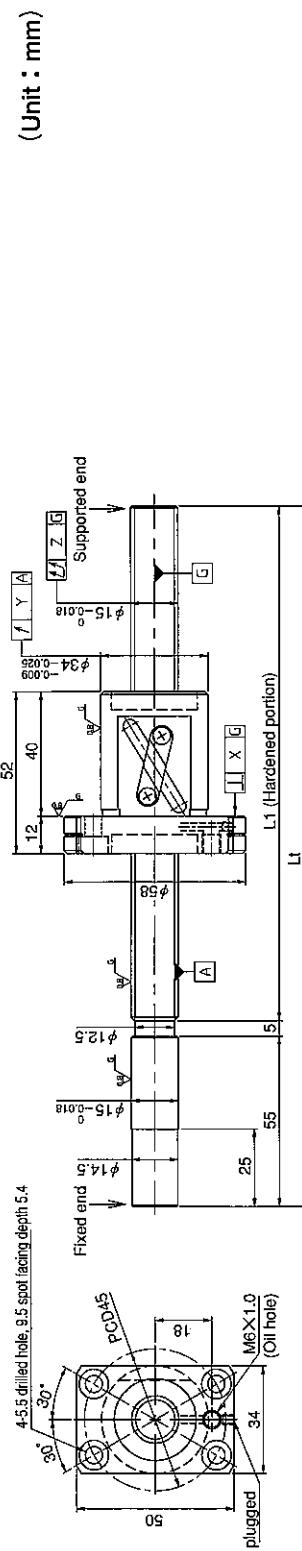


UNFINISHED SHAFT ENDS

Screw shaft diameter $\phi 15$, Lead 10



(Unit : mm)

Model No.	Axial clearance	L1	L _t	X	Y	Z	Preload torque (N·cm)		Lead accuracy		Wiper	Mass (kg)
							±Ec	ec	±Ec	ec		
GE1510DS-BALR-0600A	~0.030 (M)	540	600	0.018	0.030	0.110	—	—	—	—	—	1.27
GE1510DS-BALR-0900A		840	900			0.170						1.72
GE1510DS-BALR-1100A		1040	1100			0.210						2.17
GE1510DS-BALR-1300A		1240	1300			0.270						2.47
GE1510DS-BALR-1500A		1440	1500									2.77
*GG1510DS-BALR-0600A	~0.005 (F)	540	600	0.011	0.015	0.075	~3.0	—	—	Lip seal	—	1.27
GG1510DS-BALR-0900A		840	900			0.120						1.72
GG1510DS-BALR-1100A		1040	1100			0.150						2.17
GG1510DS-BALR-1300A		1240	1300			0.190						2.47
GG1510DS-BALR-1500A	1440	1500	0.030	0.023	0.054		0.035					

Notation of standard ground ball screw
 ● Standard length shaft without end machining
 GE1510DS-BALR-□□□□A
 GG1510DS-BALR-□□□□A

- With end machining specified on your drawing
- JIS B 1192-1987 (GG series) applies to accuracy standard values shown in the above-mentioned table.
- GE1510DS-□A□R-□□□□X□□□□-C7M
- Support unit : BUK-12A (BUK-12F, BUK-10S) and BUM-12 is recommended. (Refer to P.398)
- GG1510DS-□A□R-□□□□X□□□□-C5□
- Product with axial clearance ~0.005 (F) shown in the table may be partially preloaded.
- Preload torque shown in the table is a value before greasing.
- The grease is contained inside of nut only at the time of delivery. When using it, apply lubricant.
- For asterisked * model with unworked shaft ends equivalent to lead accuracy grade C3, contact KURODA.

Overall length Thread length

Table of optional specifications for each model

Series	Additional machining of shaft end	Axial clearance adjustment (Note 2)	Surface treatment (Note 1)	Difference of grease	Direction of nut	Wiper removal
GE	○	X	○	○	○	○
GG	○	○	○	○	○	○

(Note 1) The above-mentioned surface treatment is LD treatment (coating thickness : 1 to 2 μm).

(Note 2) For axial clearance adjustment for GG series, contact KURODA.

Ball screw specifications

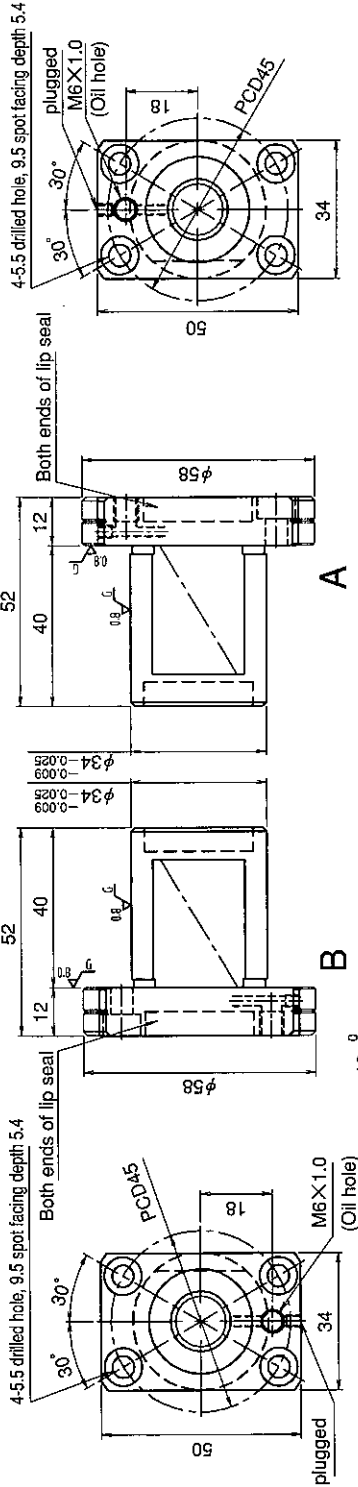
Screw shaft dia.	15	Axial clearance	~0.030 (M)	~0.005 (F)
Lead	10	Basic dynamic load rating	6900N	
Thread direction	Right-hand	Basic static load rating	12500N	
Number of circuits	2.5turn	Spacer ball	—	
Ball diameter	3.175	Lubricant	Alvania Grease No.2	

SHAFT END FINISH ORDERING SHEET

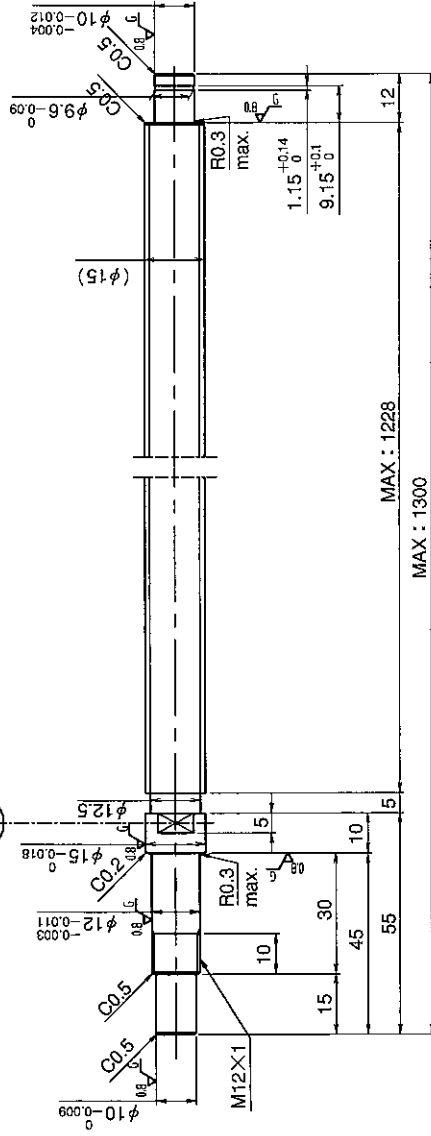
Screw shaft diameter $\phi 15$, Lead 10

(Unit : mm)

GE1510DS-BALR- X -C7M
 GG1510DS-BALR- X -C5



Select the orientation of nut flange by circling A or B.
 No marking means "B" orientation as default.



Applicable Support Unit

Direct mount : BUK-12A (Fixed end unit + Supported end unit) Refer to Page.405

Circle flange : BUM-12 (Fixed end unit + Supported end bearing) Refer to Page.412

Company Name	
Telephone	Name of Person in Charge
Company Address	