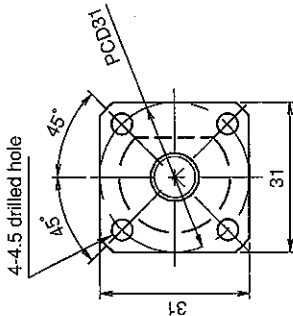
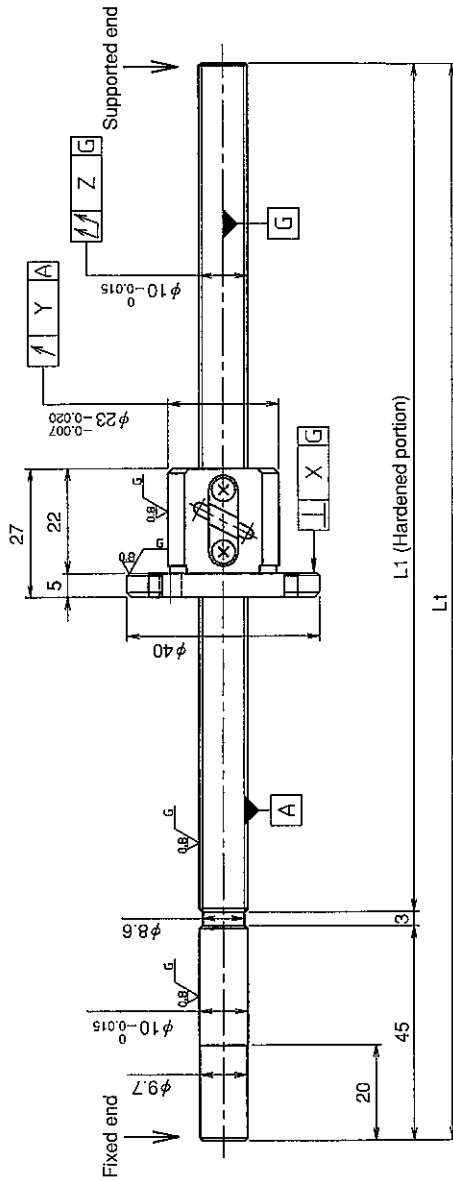


UNFINISHED SHAFT ENDS

Screw shaft diameter ϕ 10, Lead 2

(Unit : mm)



Model No.	Axial clearance	L ₁		X	Y	Z	Preload torque (N·cm)		Lead accuracy		Wiper	Mass (kg)
		202	272				±Ec	ec				
GE1002DS-EANR-0250A	~0.030 (M)	250	320	0.014	0.020	0.080	—	0.05	—	—	0.37	
GE1002DS-EANR-0320A	~0.005 (F)	250	320	0.010	0.012	0.055	~0.5	0.023	0.018	—	0.42	
*GG1002DS-EANR-0250A	~0.005 (F)	272	320	0.010	0.012	0.065	~0.5	0.023	0.018	—	0.37	
*GG1002DS-EANR-0320A	~0.005 (F)	272	320	0.010	0.012	0.065	~0.5	0.023	0.018	—	0.42	

● JIS B 1192-1987 (GG series) applies to accuracy standard values shown in the above-mentioned table.

● Support unit : BUK-8A (BUK-8F, BUK-6S) and BUM-8 is recommended. (Refer to P.398)

● Product with axial clearance ~0.005 (F) shown in the table may be partially preloaded.

● Preload torque shown in the table is a value before greasing.

● The grease is contained inside of nut only at the time of delivery. When using it, apply lubricant.

● For asterisked * model with unworked shaft ends equivalent to lead accuracy grade C3, contact KURODA.

Table of optional specifications for each model

Series	Additional machining of shaft end	Axial clearance adjustment (Note 2)	Surface treatment (Note 1)	Difference of grease	Direction of nut	Wiper removal
GE	○	X	○	○	○	—
GG	○	○	○	○	○	—

(Note 1) The above-mentioned surface treatment is LD treatment (coating thickness : 1 to 2 μm).

(Note 2) For axial clearance adjustment for GG series, contact KURODA.

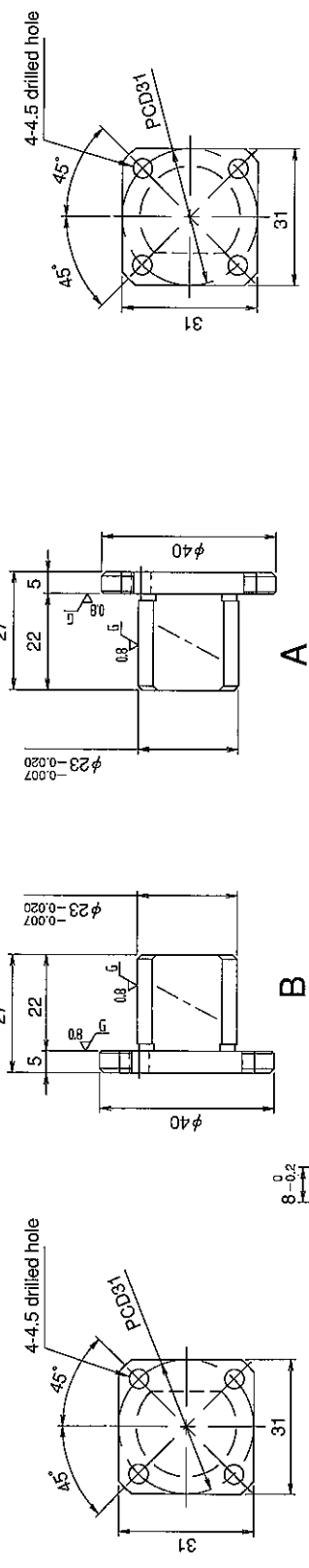
Ball screw specifications

Screw shaft dia.	10	Axial clearance	~0.030 (M)	~0.005 (F)
Lead	2	Basic dynamic load rating	2250N	
Thread direction	Right-hand	Basic static load rating	3300N	
Number of circuits	2.5turn 1circuit	Spacer ball	—	
Ball diameter	1.5875	Lubricant	Alvania Grease No.2	

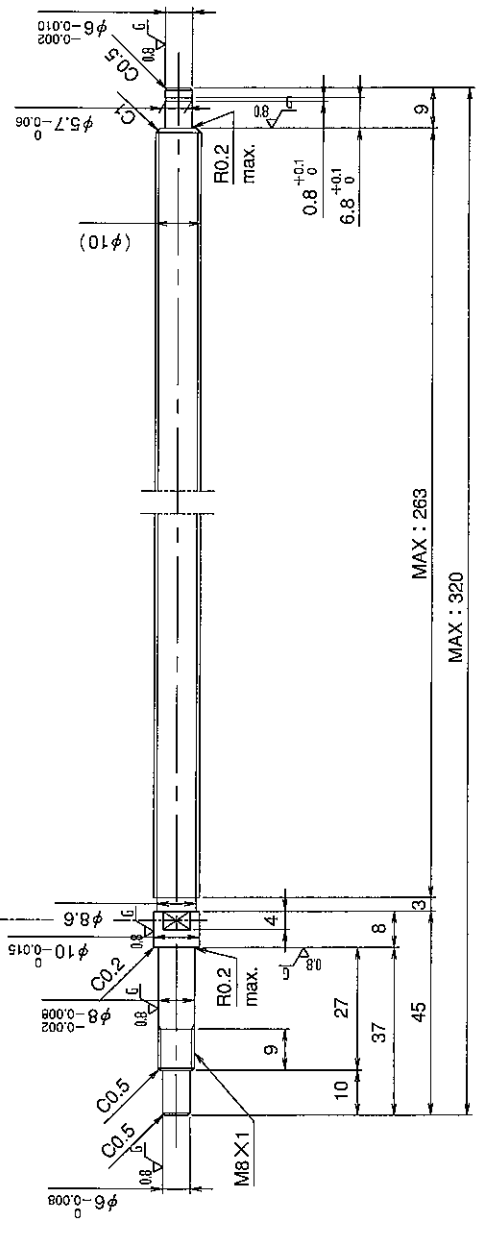
SHAFT END FINISH ORDERING SHEET Screw shaft diameter ϕ 10, Lead 2

(Unit : mm)

GE1002DS-EANR- X -C7M
 GG1002DS-EANR- X -C5



Select the orientation of nut flange by circling A or B.
 No marking means "B" orientation as default.



Applicable Support Unit
 Direct mount : BUK-8A (Fixed end unit+Supported end unit) Refer to Page.403
 Circle flange : BUM-8 (Fixed end unit+Supported end bearing) Refer to Page.410

Company Name	
Telephone	Name of Person in Charge
Company Address	

Refer to page 24 for NOTATION OF MODEL NUMBER.